



Arpeggio  
1947 Aspen Drive, NE  
Atlanta, Georgia 30345  
(404) 277-6528 (DIRECT)  
(404) 417-0100

December 29, 2021

Mr. Zachary Flowers  
Exponential Digital

Re: Ankr Mining-Harshaw Road Noise Survey

Dear Zachary:

This letter serves as a summary of the community noise measurements I made in the vicinity of your facility on Harshaw Road in Murphy, North Carolina on Tuesday, December 28, 2021. During my visit, between approximately 10 am and noon, the temperature was approximately 59°F and there was periodic mist and no significant wind. Sound measurements were made with a Larson•Davis System 824 sound level meter and real time analyzer (SN 1771) with a Larson•Davis Model 2560 ½" random incidence microphone (SN 3249) and Larson•Davis Model PRM902 preamplifier (SN 2276). This system was calibrated with a Larson•Davis Model CAL250 precision acoustic calibrator (SN 4096).

Figure 1 shows an aerial photograph with the location of Ankr and the ten measurement locations indicated.

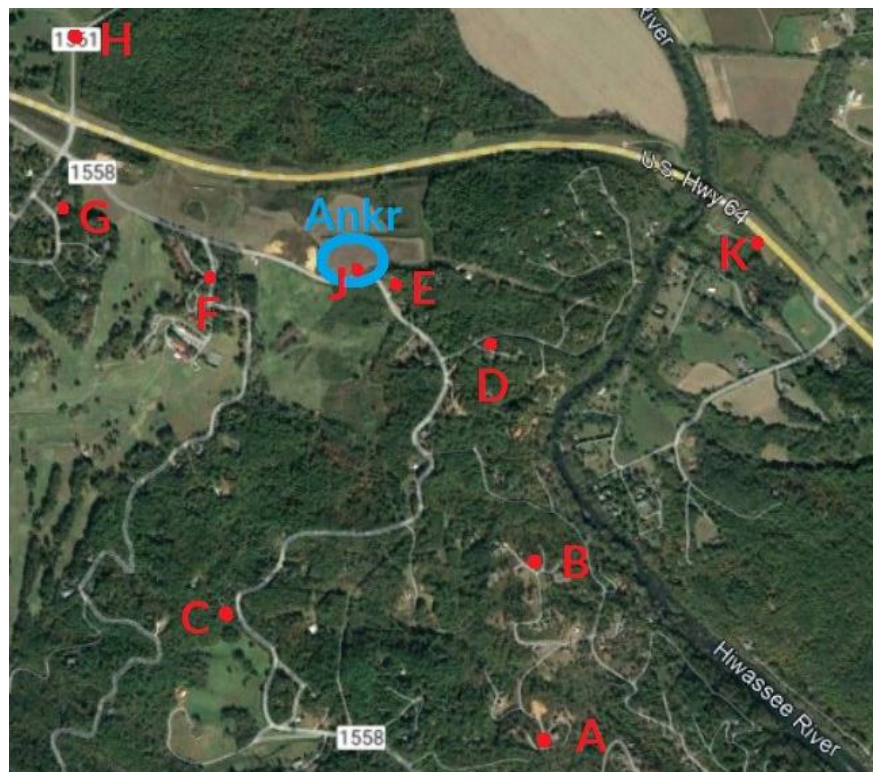


Figure 1 - Aerial Photograph Showing Approximate Sound Measurement Positions and Ankr

Table 1 shows the sound measurement locations keyed to the identifiers in Figure 1 along with the sound level measured at each location. Table 2 shows the average sound levels produced by common sources.

**Table 1 – Site Identification and Measured Sound Levels**

ID	Site Description	Sound Level, dBA
A	307 Clear Creek Road	40.0
B	316 Pin Oak Ridge	40.0
C	4156 Harshaw Road	35.5
D	31 Gooseberry Road	40.6
E	3295 Harshaw Road	56.3
F	Smoke Rise Townhouses near 70 Club House Drive	53.9
G	194 Caddie Circle	43.2
H	Riverwalk on the Hiawassee Front Gate	49.4
J	Harshaw Road in Front of Ankr	73.1
K	Highway 64 Near McCombs Road	59.1*

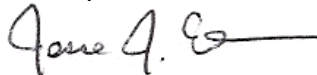
\*This measurement was primarily impacted by distant traffic on Highway 64.

**Table 2 – Average Sound Levels Produced by Common Sources**

Source	Sound Level, dBA
Large truck at 50' (55 mph), Lawnmower (gas) at 5'	85
Vacuum cleaner at 3'	80
Passenger (non-hybrid) car at 50' (55 mph)	70
Normal conversational speech at 3'	60-65
Bird calls	40-50
Wind in trees (10 mph)	40-45
Walking on carpet	30-40
Slight rustling of leaves	20-30

Please feel free to contact me at 404-277-6528 if you have any questions or need additional assistance.

Sincerely,



Jesse J. Ehnert, INCE Bd. Cert.  
Arpeggio